

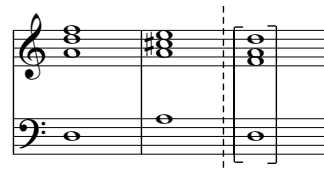
# Clausula formalis perfecta

Totalis (*Ganzschluß*)



4 3

Aquiescens (*Plagalschluß*)



# Clausula formalis imperfecta

Ordinata  
(*stufenweise*)

Saltiva  
(*Altklauselimperfection*)

Dissecta desiderans  
(*Halbschuß*)

(*Altizans*)

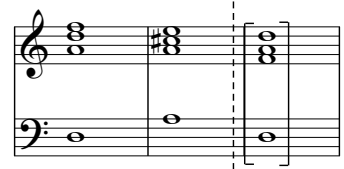
(*Moll- statt Durterz*)



6



3<sup>b</sup>



Adscendens  
(*steigend*)

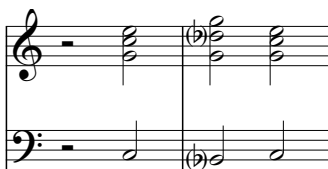
Descendens  
(*fallend*)

Perfectior  
(*Cantizans*)

Imperfectior  
(*Occulta, Trugschluß*)

Perfectior  
(*Tenorizans*)

Imperfectior  
(*Gegenschritt*)



6



7 6



4 3  
8 7



4 3 5